

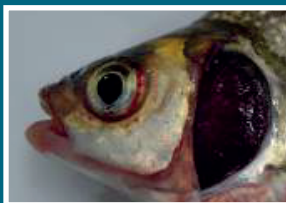
Calling all Boaters

Help stop the Invasion!

**STOP
THE
SPREAD**

Invasive plants and animals harm our wildlife and environment. They can damage boat engines, clog propellers and block waterways. Contaminated boats can cause their spread.

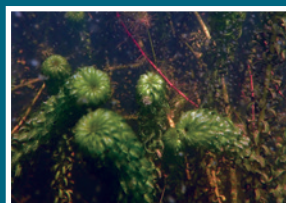
Report any invasive species you find, including:



FISH DISEASES



QUAGGA MUSSEL



AFRICAN CURLY
WATERWEED



KILLER SHRIMP

Protect the environment you enjoy by keeping
your boat and kit free of invasive species

CHECK

Check boats, equipment and clothing after leaving the water for mud, fouling, or plant material. Remove anything you find and leave it on the bank or in the bin.

CLEAN

Clean everything thoroughly, paying attention to fenders, bow thrusters, props, the lip around your boat, and areas that are damp and hard to access. Use hot water (at least 45°C) if you can.

DRY

Dry – drain water from every part of your boat and dry everything until dry for at least 48 hours before using elsewhere as some invasive plants and animals can survive for weeks in damp conditions.

Disinfect all items if complete drying is not possible.

**Remember to
check these places**



An Roinn Tithíochta,
Rialtais Áitiúil agus Oidhreacht
Department of Housing,
Local Government and Heritage



National
Biodiversity
Data Centre
A Heritage Council Programme



Invasives.ie
Invasive Alien Species in Ireland



Waterways Ireland
Uiscebhéalai Éireann Waterways Airlann



Gníomhaireacht na Lochanna
Factríe fur Loughs



Find out more about invasive plants and animals and how you can help to stop the spread at:

invasives.ie/biosecurity/check-clean-dry