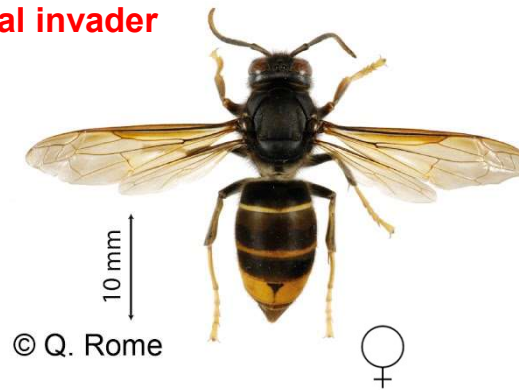


# Asian hornet (*Vespa velutina var. nigrithorax*) comparison identification guide

If Asian hornet were to become established in Ireland it could have a significant negative impact on honeybees and other pollinators. In Ireland, it is frequently confused with the native Greater hornet wasp and other native species such as common wasp and other wood wasps. Report suspected sightings immediately with a photo to <http://records.biodiversityireland.ie/record/invasives>. For honeybee hive concerns e-mail [beekeeping@agriculture.gov.ie](mailto:beekeeping@agriculture.gov.ie)

## Asian hornet (*Vespa velutina nigrithorax*) - **Potential invader**

- ✓ Queen up to 3cm & worker up to 2.5cm long
- ✓ Dark colour antennae
- ✓ Long orange face
- ✓ Legs yellow at the ends
- ✓ Abdomen mostly black except for yellow band on 4<sup>th</sup> segment
- ✓ Entirely brown or black thorax
- ✓ Small thin stinger not normally visible
- ✓ **NOT known to be established in Ireland**



## Greater hornet wasp (*Urocerus gigas*)

- ✓ Female up to 4.5cm in length
- ✓ Antennae and 'false' eyes on head yellow
- ✓ Yellow legs
- ✓ Long cylindrical abdomen
- ✓ Distinctive yellow and black banded abdomen
- ✓ Female has an obvious long sting-like appendage (ovipositor) to lay eggs, it does not sting
- ✓ **Native Irish species**



## Common Wasp (*Vespula vulgaris*)

- ✓ Queen to about 2cm in length
- ✓ Recognizable yellow and black striped abdomen with black drop and dot marks
- ✓ Antennae black
- ✓ Yellow face with black anchor-shaped marking
- ✓ Yellow lateral band on the thorax
- ✓ Legs mostly yellow
- ✓ **Native Irish species**

