



Have you seen this insect?

Asian hornet (aka Yellow-legged Hornet)
Vespa velutina



An tIonad Náisiúnta
Sonraí Bithéagsúlachta
National Biodiversity
Data Centre

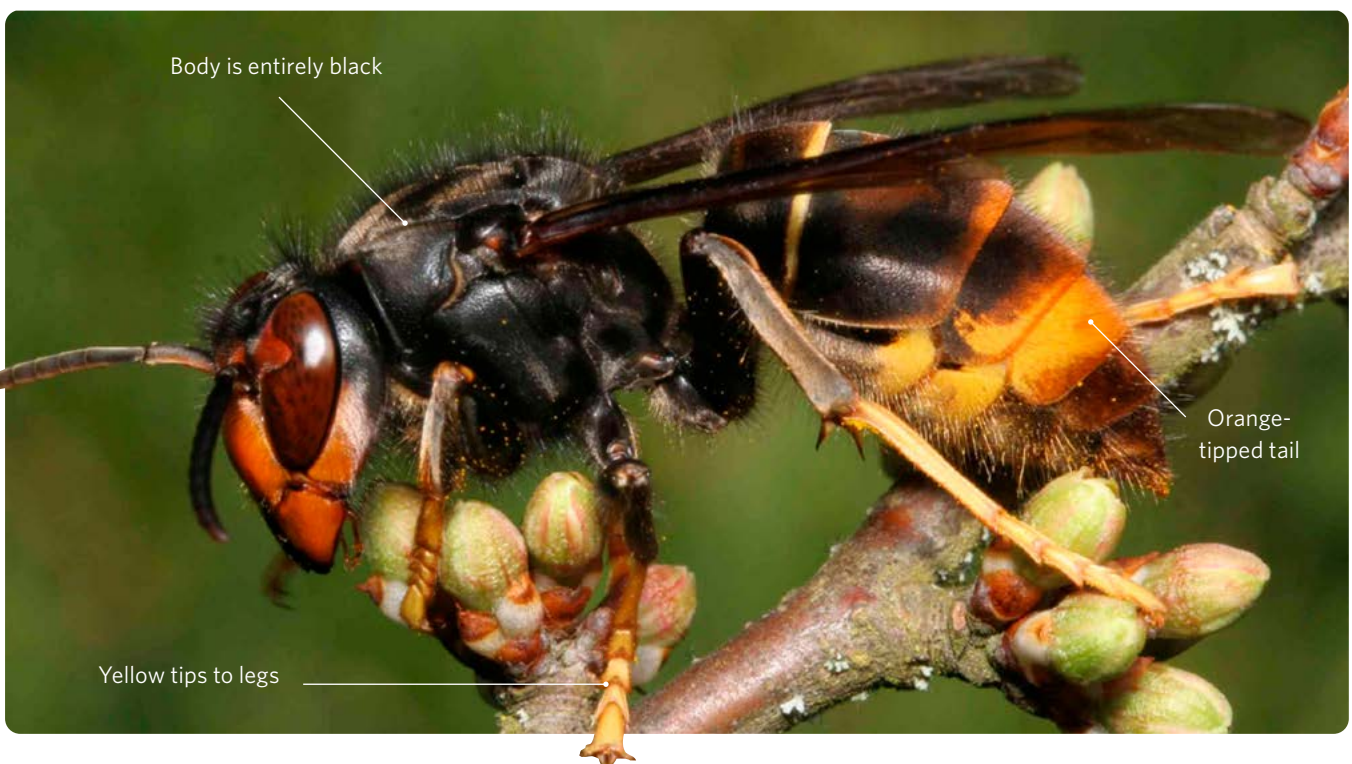
What is it?

A highly efficient predator of native insects, the Asian hornet poses a serious threat to honeybees and other pollinators.

Originally from Asia, this invasive species was accidentally introduced to France in 2004, where it spread rapidly into neighbouring countries. Several sightings have been confirmed from Ireland, but the species is not established here. We now need your help to watch and report this invasive species.

Where might I see it?

Asian hornets might be seen visiting flowers and fruits, or near beehives. They are also attracted to roadkill, fish sold in markets and other sources of protein. You may also spot an Asian hornet nest.



Embryo and primary nests:

At this stage all wasp and hornet nests look similar. **Only report if seen with Asian hornet.**



Secondary nests are larger and should not be disturbed.

Images from left to right show secondary nests in a building, high in a tree and in a hedge. **Use binoculars to identify secondary nests from a safe distance.**



Please report Asian hornet sightings immediately with a photo

Use our online recording form:

<https://invasives.ie/asianhornetreporter>

For more information visit www.invasives.ie or email invasives@biodiversityireland.ie

Scan to report
an Asian hornet
or an Asian
hornet
nest.



Did you see an Asian hornet?

...or was it something else?



An tIonad Náisiúnta
Sonraí Bithéagsúlachta
National Biodiversity
Data Centre

Species most likely to cause confusion

It is very easy to confuse Asian hornet with other species. Many insects look very alike. To help us confirm the identity and follow up on suspected sightings, we ask that you provide a photo.

- A** Asian hornet *Vespa velutina* **B** Giant Woodwasp *Uroceras gigas* **C** Common Wasp *Vespula vulgaris*



- A** The invasive Asian hornet is usually 2-3 cm in length. The body is black with an orange-tipped tail.
- B** The native giant woodwasp is frequently mistaken for Asian hornet. It is much larger at 5 cm or more. It is yellow and black in colour. This species is widespread.
- C** The native common wasp is smaller than the Asian hornet at 1-2 cm long. The wasp is characteristically yellow and black. Notice the different colours of wasp and hornet in the picture.

Always try to safely take a picture, and never kill a native insect doing no harm.

Other species that can cause confusion



Drone Fly
Eristalis tenax



Birch Sawfly
Cimbex femoratus



Spotted Longhorn
Rutpela maculata



Honeybee
Apis mellifera



Giant Horsefly
Tabanus sudeticus

Who is also involved



NPWS
An tSeirbhís Páircéanna
Náisiúnta agus Fíadhúlra
National Parks and Wildlife Service



mus eum
Ard-Mhúsaem
na hÉireann
National Museum
of Ireland



An Roinn Talmhaíochta,
Bia agus Mara
Department of Agriculture
Food and the Marine



**Shared Island
Initiative**



**An Chomhairle Oidhreachta
The Heritage Council**

National Biodiversity Data Centre
Beechfield House,
South East Technological University,
West Campus, Carriganore,
Co. Waterford,
Ireland. X91 PE03

 www.biodiversityireland.ie
 **+353 51 306 240**

The National Biodiversity Data Centre
is a company limited by guarantee with
charity status. Registered Charity Number:
20206927