

# Environmental Farming Scheme (EFS)

 **Designed to bring designated sites and priority habitats into favourable management**

 **Rapid Condition Assessments and site-specific Remedial Management Plan completed via independent farm planners**

 **DAERA provides processes and guidance**

to support planner assessments

 **Leads to a Site-Specific**

**Remedial Management Plan (ssRMP)**

or **farm map**



Cattle at Knockmore – G Buchanan

*Sustainability at the heart of a living, working, active landscape valued by everyone.*

# Environmental Farming Scheme (EFS)

## EFS: Three Levels of Support

### ● Higher

🌍 *Designated + Priority Habitats*

**Tier 1:** 🦩 Natura 2000 / Emerald Network (SAC, SPA, Ramsar)

**Tier 2:** 🌲 ASSIs

**Tier 3:** 🌱 Priority habitats & species outside designated sites

### ● Group (Landscape Projects)

🤝 *Supporting cooperation across targeted areas*

Encourages joint action by Wider / Higher agreement holders

Ideal for larger-scale, shared conservation outcomes

### ● Wider (for wider countryside)



*ng, active landscape valued by everyone.*

## How EFS Has Helped the NI Countryside

### Habitat Management & Grazing

**Expanded management across habitats** including grassland, peatland, woodland and coastal areas

 **Introduced bespoke management and appropriate grazing regimes** tailored to habitat needs

### **Payment for Non – Profit Investments (NPIs)**

 such as control of **scrub, rushes, bracken, and invasive species**

**Fencing** to support controlled grazing, livestock numbers and timing

**Riparian buffers** (Scott et al., 2023)

### **Habitat Restoration and Enhancement Measures**

 **Scrapes for waders**

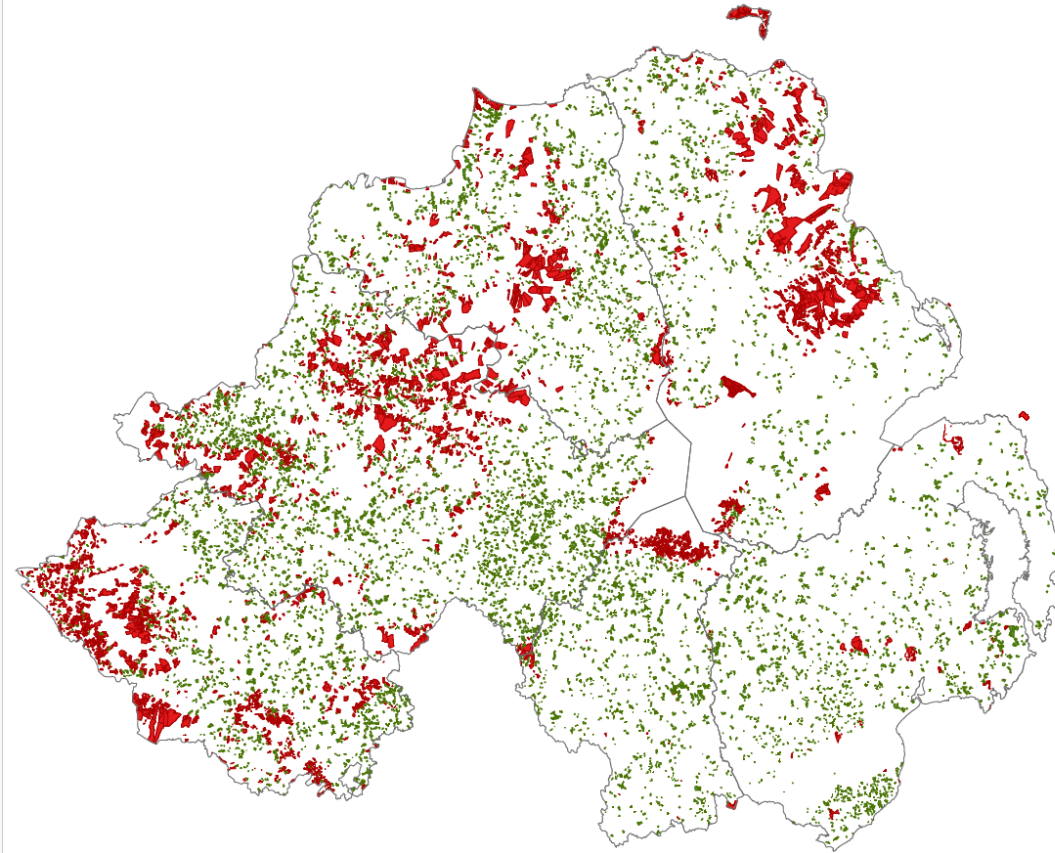
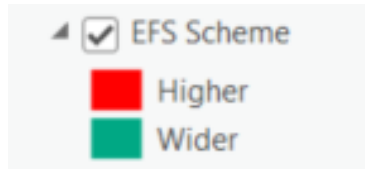
 **Peat dams** to restore peatland hydrology

 **Initial bird surveys show positive trends** where EFS agreement in place

*Sustainability at the heart of a living, working, active landscape valued by everyone.*

# Environmental Farming Scheme (EFS)

## EFS – Tranches 1 - 8 coverage



*Sustainability at the heart of a living, working, active landscape valued by everyone.*

# Environmental Farming Scheme (EFS)

## NED Web viewer

<https://www.daera-ni.gov.uk/services/natural-environment-map-viewer>

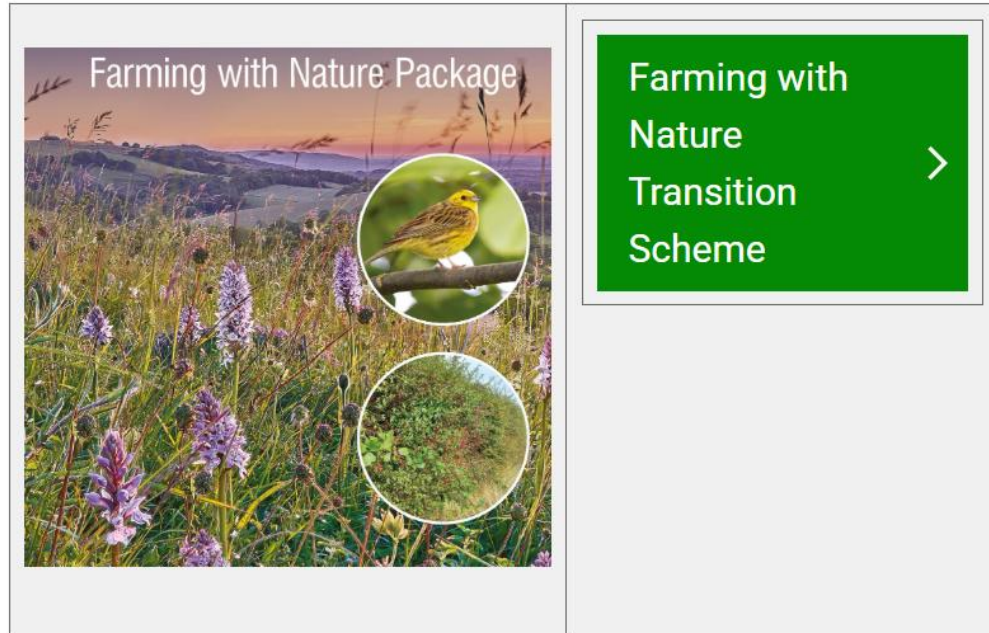


🕒 natural environment map viewer

*Sustainability at the heart of a living, working, active landscape valued by everyone.*

# Future Agri-environment schemes – Farming with Nature

The Farming with Nature Package aims to support farm businesses across all land types, to make substantial contributions to environmental improvements and sustainability.



[Farming with Nature Transition Scheme now open for applications | Department of Agriculture, Environment and Rural Affairs](#))

*Sustainability at the heart of a living, working, active landscape valued by everyone.*

**The Farming With Nature Transition scheme (a replacement for Environmental Farming Scheme Wider) was launched in 2025 and DAERA officials are working to expand the packages offered in 2026**

**Further phases of the Farming with Nature package are being developed to scale up nature friendly farming across Northern Ireland to protect and restore nature.**

---

*Sustainability at the heart of a living, working, active landscape valued by everyone.*

**This will include a scheme replacing EFS Higher to provide focused support for designated sites and priority habitats (subject to business case approval and legislation being in place), as well as a scheme to facilitate collaboration and advisory support on a landscape scale to address specific environmental concerns (such as invasive species)**

---

*Sustainability at the heart of a living, working, active landscape valued by everyone.*

# Communication in the press and DAERA website will be released in due course with more information



*Sustainability at the heart of a living, working, active landscape valued by everyone.*