

# Aquatic Invasive Species Working Group



**Comhairle Contae  
an Chabháin**  
Cavan  
County Council



**NPWS**

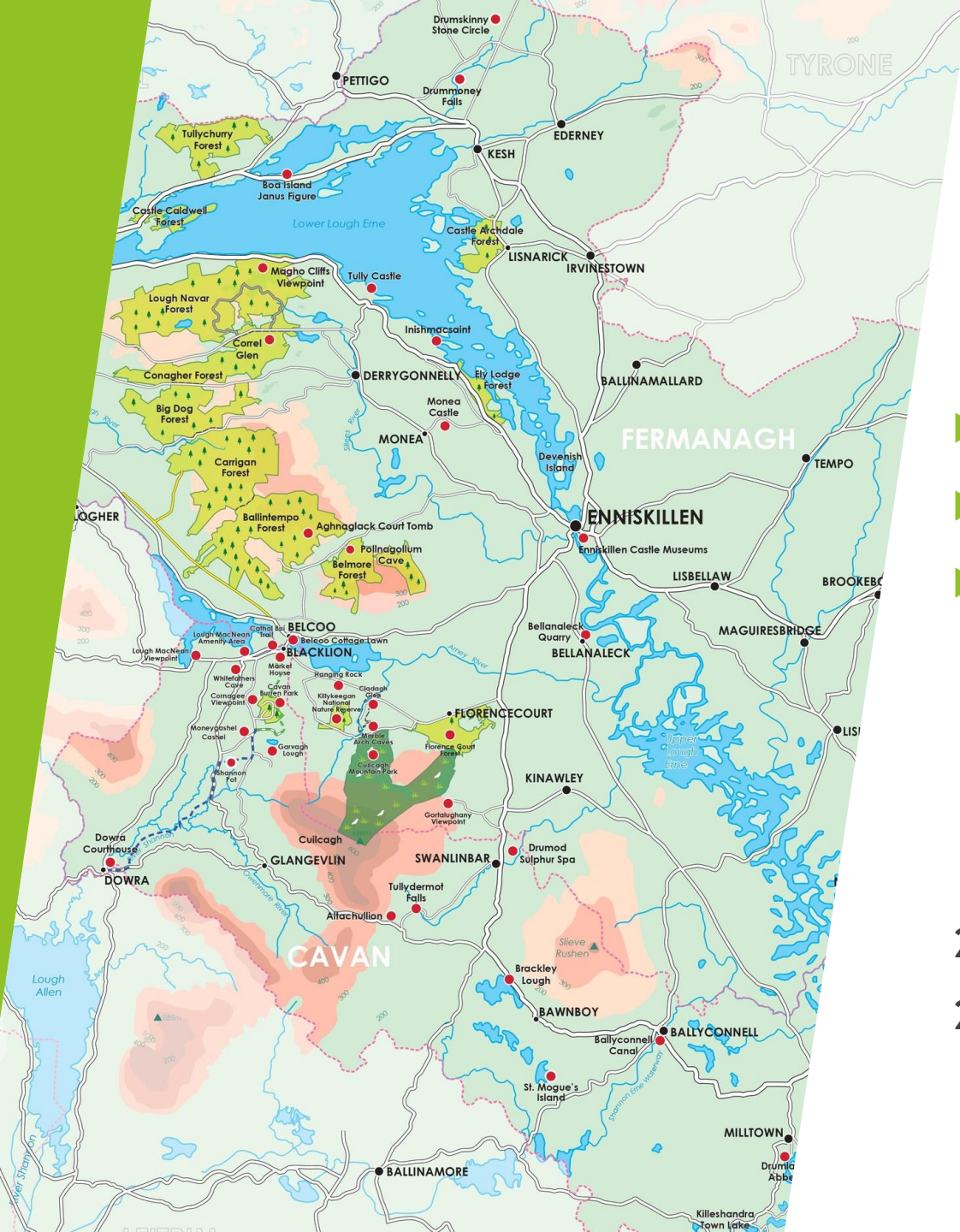
An tSeirbhís Páirceanna  
Náisiúnta agus Fiadhúlra  
National Parks and Wildlife  
Service



**Iascach Intíre Éireann**  
Inland Fisheries Ireland



**CUILCAGH  
LAKELANDS  
GEOPARK**



# Lough Oughter

## Special Area of Conservation

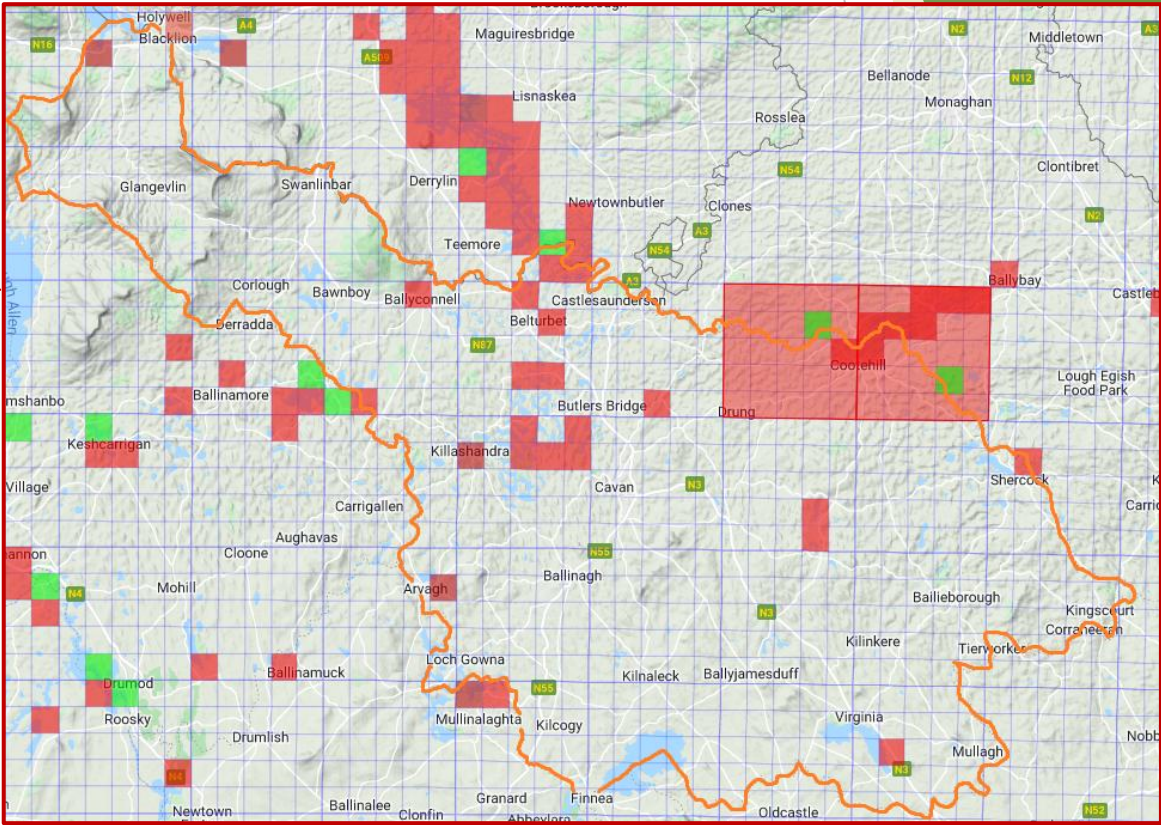
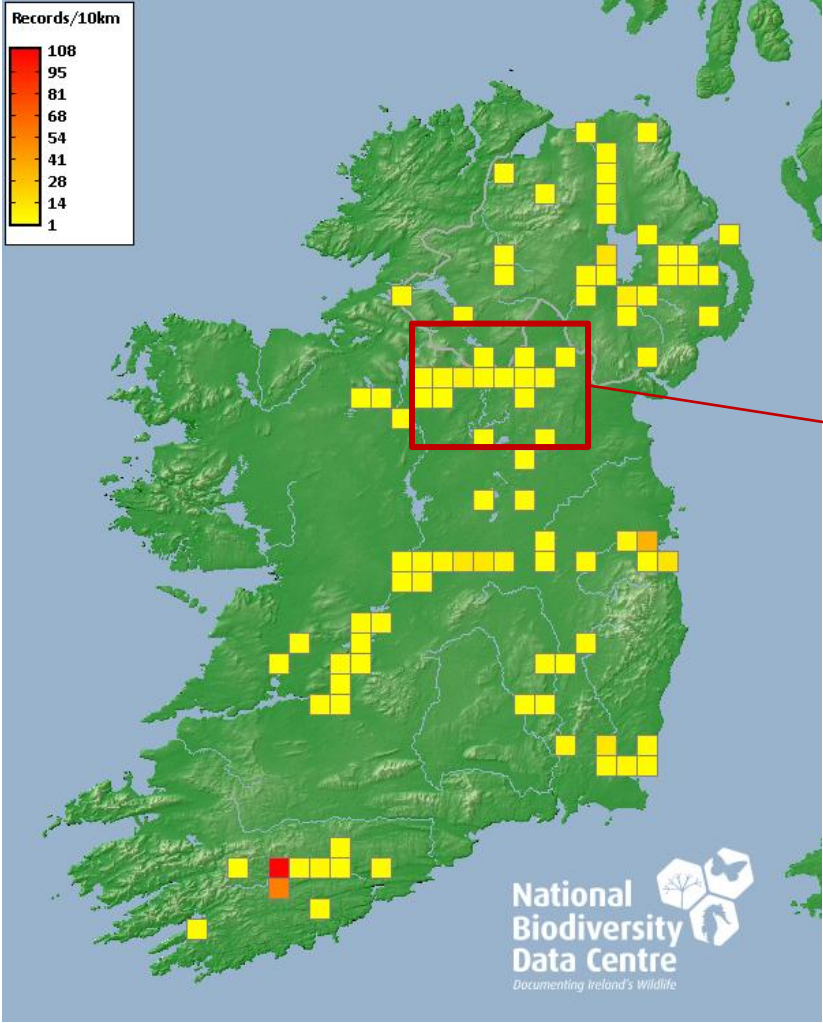
- ▶ Drowned Drumlin Landscape.
- ▶ First European GeoPark.
- ▶ Significant:
  - ▶ Amenity
  - ▶ Business
  - ▶ Ecology

2022 - Invasives Reported (Tourism Officer)

2023 - Assessment of Invasives (INVAS)

# Nuttall's Waterweed

## *Elodea nuttallii*





# Aquatic Invasive Species Working Group

## Current Actions:

- Working Group Active in late 2025
- Submission to Community Water Development Fund 2026 - 15,000 EUR
- Suitable site identified for pilot removal

## Future Actions:

- Invasive Species Management Plan
- Communications Campaign
- Community Events
- Data collation following initial removal

Wish to participate?

[ECONNAUGHTON@LAWATERS.IE](mailto:ECONNAUGHTON@LAWATERS.IE)



# Scalable Solutions for Cherry Laurel

*Prunus Laurocerasus*

Experience from the  
Gaelic Woodland Project



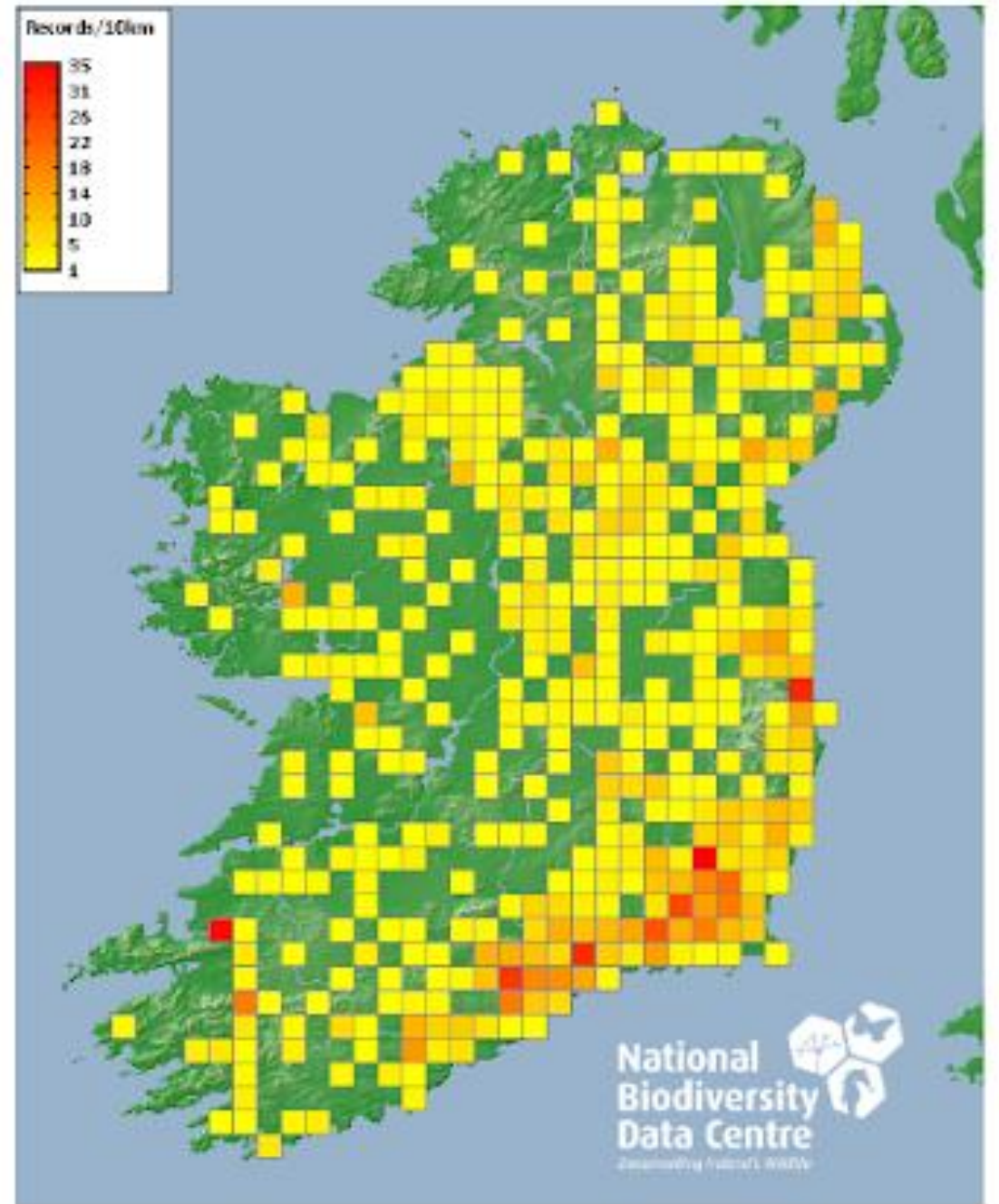


# Introduction to Cherry Laurel

- Evolved in Eurasia ~ Culture and Ecology.
- Evergreen canopy.
- Biochemistry - cyanogenic glycosides.
- Spread by birds and humans.
- High Impact Invasive Species

## Current Management:

- Sold in garden centres →
- **Island-wide infestation**
- Current Strategy :
  - Approach insufficient to scale of problem
  - Not financially feasible to remove all laurel
  - Biomass chipped and left on the floor
  - Infestation returns post-clearances



# Gaelic Woodland Project Empowering Community

Four years experience  
Four infestations

Pillars of our Approach:

- ▶ Financially feasible
- ▶ Generate by-product
- ▶ Community Stewardship
- ▶ Cultural Reinvigoration



# Meitheal Timeline 2022-2026

## 2022 - Kilyon Manor, Start of Year

- ▶ Landowner Permission
- ▶ Focus on experimentation
- ▶ Experience in Core Team of four
  
- ▶ Published methodology & safety statement
- ▶ Numbers grew to thirty good people
- ▶ Monthly removals - 1,200 volunteer hours
- ▶ 1.8 acres cleared



# Meitheal Timeline 2022-2026

## Finished in Kilyon Manor

- ▶ Infestation gone
- ▶ Experiment with stump removal
- ▶ Five tonnes of firewood harvest

## 2023 Moved to Hamwood Estate

- ▶ Ten removals in 10 months
- ▶ Total 220 people
- ▶ Ten tonnes of biofuel harvested
- ▶ Free Firewood Giveaway



**FREE**  
*Cherry Laurel Logs*  
collection day!



**September 8th,**  
**Dunboyne, Co. Meath.**  
Read post for more info,  
and link in bio to register!

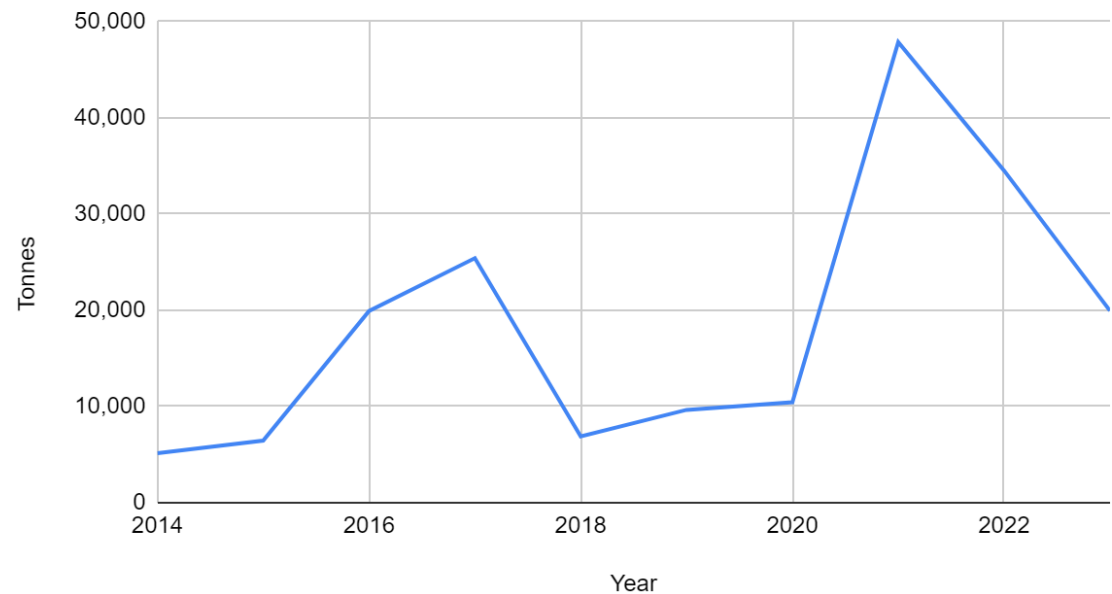


# Waste to By-Product

## Laurel Logs: A Transitional Alternative

- Turf Harvesting prohibition since 2014.
  - >60,000 homes reliance for home heating.
  - No alternative offered.
  - Surge in peat imports.
- **Total cost of imports to Irish homes over 10-years: €38,638,000**

**Peat Imports 2014 - 2023**

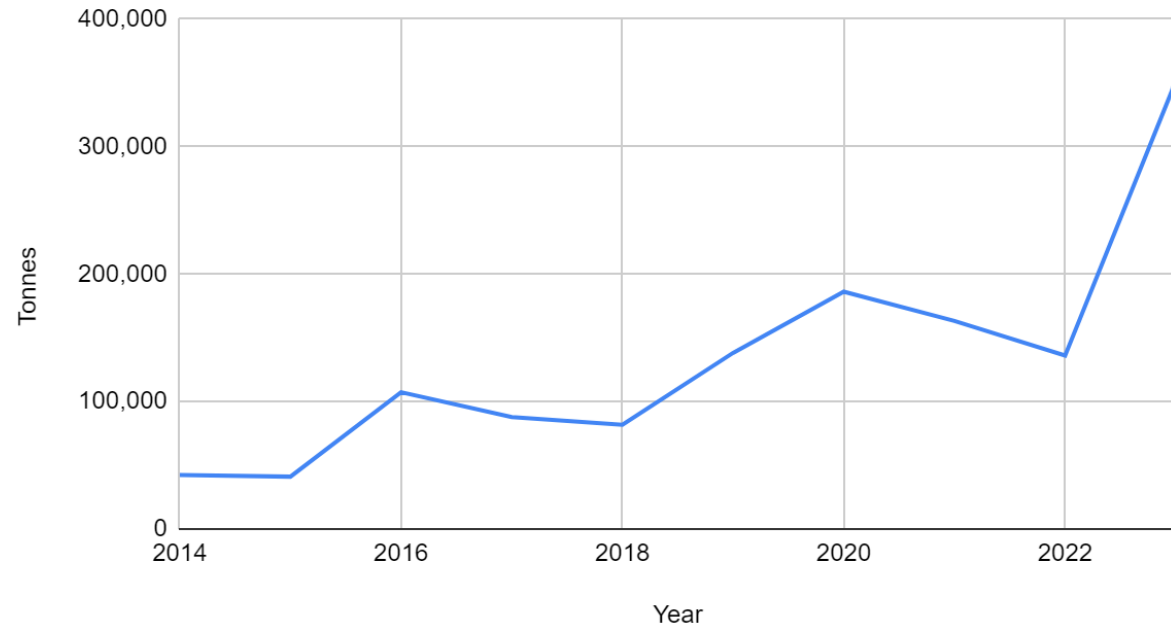


# Rise of Firewood:

## Imports Sky-Rocketing in Energy Crisis

- No culture of firewood harvesting due to past deforestation. Reliance on Peat since 1700s.
- Consumer shifting to firewood:
  - €9,812,000 in 2014
  - €71,223,000 in 2023
- Total cost of imports to Irish homes over 10-years: **€275,766,000**

Firewood Imports 2014 - 2023



# Meitheal Timeline 2022-2026

## 2024 - No events

- ▶ Trained 13 Project Officers (capacity building)
- ▶ Focused on advocacy: First report submitted

## 2025 Lisnavagh House, Carlow

- ▶ Second report submitted
- ▶ Monthly meitheals with Officers
- ▶ Refining cultural message
- ▶ Partner with *Conradh na Gaeilge*



7ú Márta • Caisleáin Luttrellstown, Baile Átha Cliath

# Seachtain na Gaeilge

le Craob na Coille

Bí linn do Mheitheal speisialta i Luttrellstown, Baile Átha Cliath, áit a mbeidh muid ag obair chun Labhras Silín ionrach a bhaint as an gcoill dhúchasach álainn seo, chun cabhrú leis an éiceachóras teacht slán arís.

Is deis iontach é seo freisin chun foghlaim faoi éiceolaíocht annamh na háite seo, agus beidh seisiún ióga trí Ghaeilge ar siúl ar maidin chomh maith.

Lá lán le Gaeilge, nádúr agus comhlúadar a bheidh ann, bí páirteach!

Tuilleadh eolais & clárú ar ár [Linktr.ee](https://linktr.ee/craobnacoille)

Le tacaíocht ó:

An Roinn Forbartha Tuaithe agus Pobail agus Gaeltachta  
Department of Rural and Community Development and the Gaeltacht

**CISTE SPREAGTHA**



# Methodology Brief

## Preparation:

- ▶ Site assessment
- ▶ Assemble core team (<5 persons)

## Phase 1:

- ▶ Pull up younger shoots (<5 years)
- ▶ No treatment

## Phase 2:

- ▶ Silky saws for medium shrubs
- ▶ No large laurel felling

## Ongoing:

- ▶ Create brash piles
- ▶ Tree planting & rewilding



# Realistic Goals

## Focus on Young Infestations

- ▶ Prevent development
- ▶ Arrest growth

## Teach Methodology

- ▶ Host and visit groups
- ▶ Accessible methodology

## Advocacy

- ▶ Letter to the Minister

## Demonstrate Value

- ▶ Biofuel Certification

## Integrated Approach

- ▶ No paid staff
- ▶ Supplement conventional removals



## Coalition for the Cultural Shift

- **Prohibit the sale of Cherry Laurel:**
  - Currently sold in garden centres
  - NPWS Risk Assessment ongoing
  - Open letter for the Oireachtas and Minister
  - Awareness campaign
- **Propagate methodology:**
  - Develop media for adoption of methodology
  - Travel and teach communities
  - Proof of concept: Viable Biofuel By-product.

### COMMON LAUREL (CHERRY LAUREL)

A fast growing hardy and reliable evergreen hedge. The large glossy leaves of *Prunus laurocerasus* *Rotundifolia* are favourite for Irish gardens and it is its speed of growth and its reliability that make this Laurel a perfect choice for hedging and cover to many gardens.

Easy to grow in any moist but well drained soil in sun or partial shade it has a low maintenance requirement. It is a hardy shrub able to tolerate temperatures down to as low as minus 20 centigrade.

Hedging Spacings: 18" (45cm) for hedges up to 6ft. Space 2ft (60cm) apart for hedges 6ft+

€6.95

In stock

QUANTITY

1

ADD TO BASKET

# Conclusion

- ▶ Join Coalition for the Cultural Shift
  - ▶ Speak to me today
- ▶ Methodology and Reports
  - ▶ Use QR Code
- ▶ Social media and quarterly newsletters
  - ▶ Instagram, LinkedIn & website

[www.gaelicwoodlandproject.com](http://www.gaelicwoodlandproject.com)

Contact: [info@gaelicwoodlandproject.com](mailto:info@gaelicwoodlandproject.com)

