

Lough Neagh Shoreline & Islands Team

Work on
Invasive Species



LOUGH NEAGH
PARTNERSHIP

Aims & Objectives: Managing & Protecting Lough Neagh

- The protection of the natural environment
- The conservation of its built and cultural heritage.
- The promotion and development of the lough as a tourism destination
- The economic development of the lough and the wider area
- Developing navigation and safety on the lough



Shoreline & Islands Team



Peter Harper
Shoreline Environment Team Manager



Peter Kearns
Lough Neagh Ranger



Charlotte Boyd
Lough Neagh Ranger

Designations

RAMSAR- Wetland of International Importance

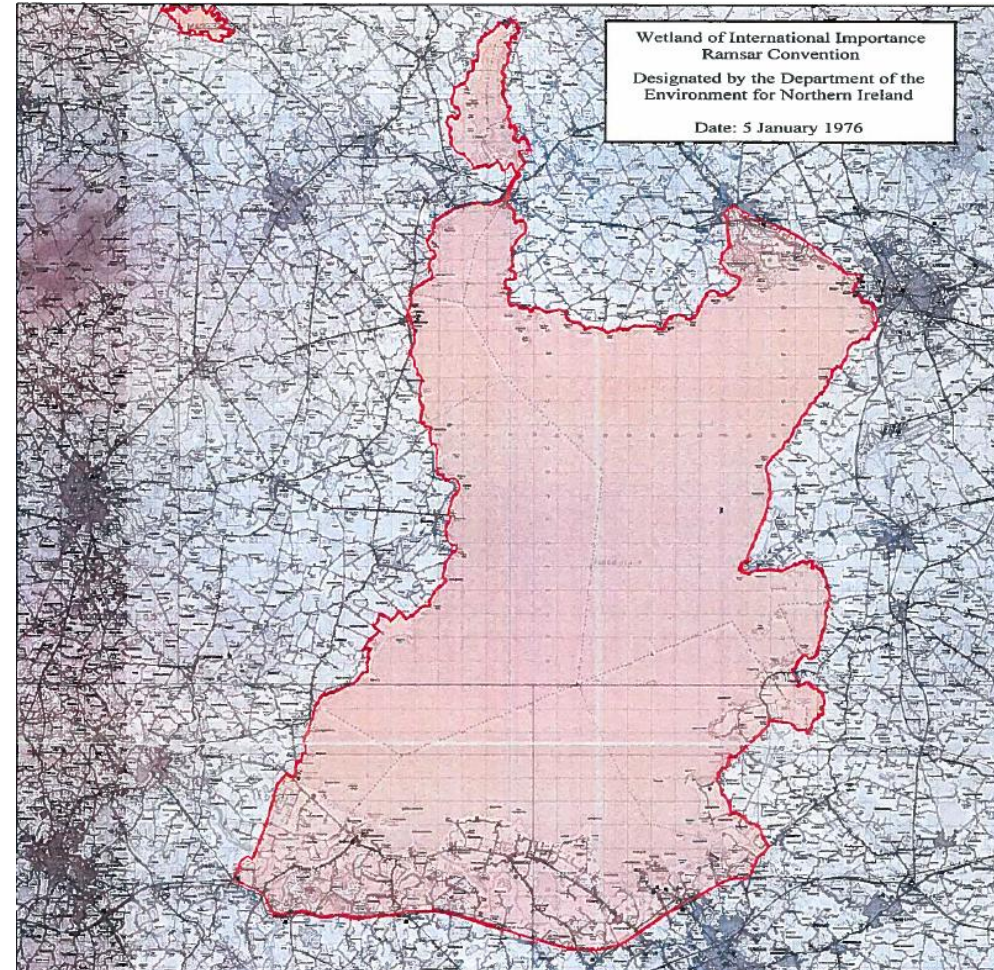
Area of Special Scientific Interest (**ASSI**)

Special Protection Area (**SPA**)

Special Areas of Conservation (**SACs**)

National Nature Reserve (**NNRs**)

ASSI/SPA/RAMSAR Management Plan?



Areas of Work

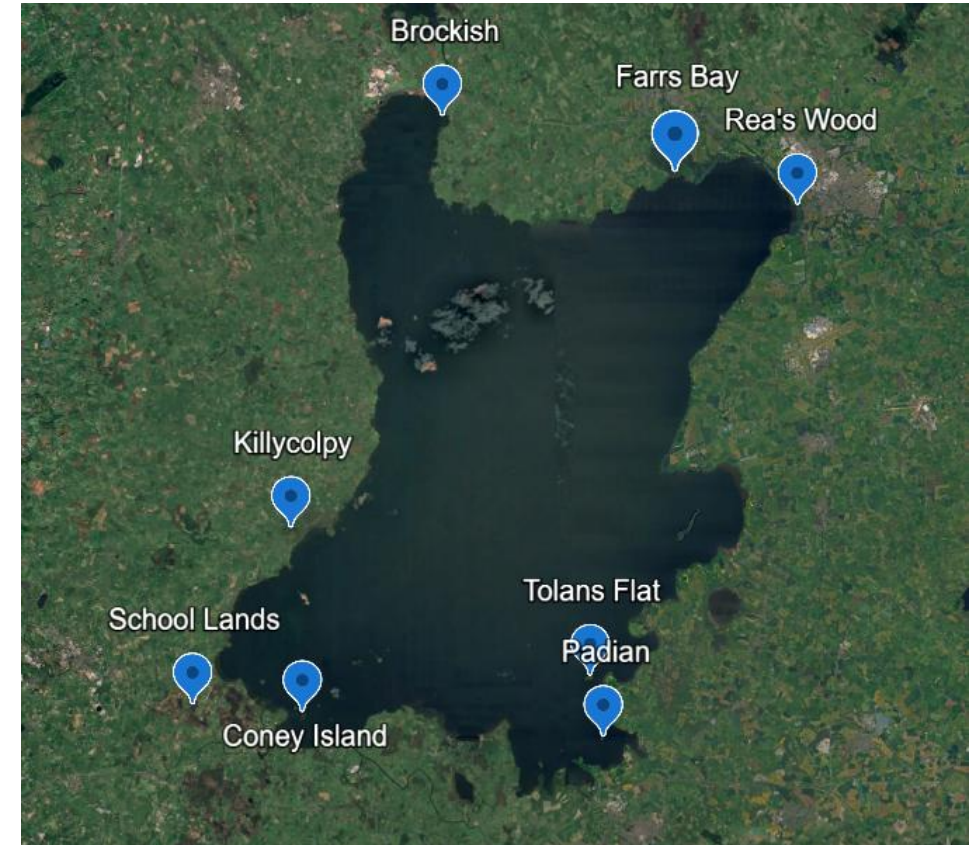
Islands:

- Brockish
- Padian
- Tolan's Flat
- Coney

SAC's:

- Farris Bay
- Rea's Wood

- Killycolpy Local Nature Reserve
- School Lands



Island Invasive Control

Himalayan Balsam:

- Brockish
- Padian
- Tolan's Flat



Rhododendron, Sycamore:

- Coney Island





SAC Invasives

Farrs Bay and Rea's Wood:

- Rhododendron
- Salmonberry
- Skunk Cabbage
- Giant Hogweed
- Himalayan Balsam



Working in Partnership

- Councils
- The Conservation Volunteers
- NIEA
- South West Lough Neagh Rivers and Islands Association
- Lough Neagh and Lough Beg Wildfowling & Conservation Association
- Public



Volunteers Needed!

Lough Neagh Partnership need a team of volunteers to help us clear scrub in the Derrytresk area.

Date: Saturday 18th November
Time: 10am-12pm
Meeting Place: Kingsisland P.S

If you'd like to take part please contact Peter:
peter.kearns@loughneaghpartnership.org