

Midland's Mink Eradication Programme



BREEDING WADERS
CIP



SCAN ME



An tSeirbhís Páirceanna Náisiúnta
agus Fiadhúlra
National Parks and Wildlife Service



SCAN ME



Introduction



The Midland's Mink Eradication Programme MMEP is Ireland's first large-scale Mink eradication attempt. The programme is a collaboration between the Breeding Waders European Innovation Partnership (EIP), the National Association of Regional Game Councils (NARGC) and the National Parks and Wildlife Service.

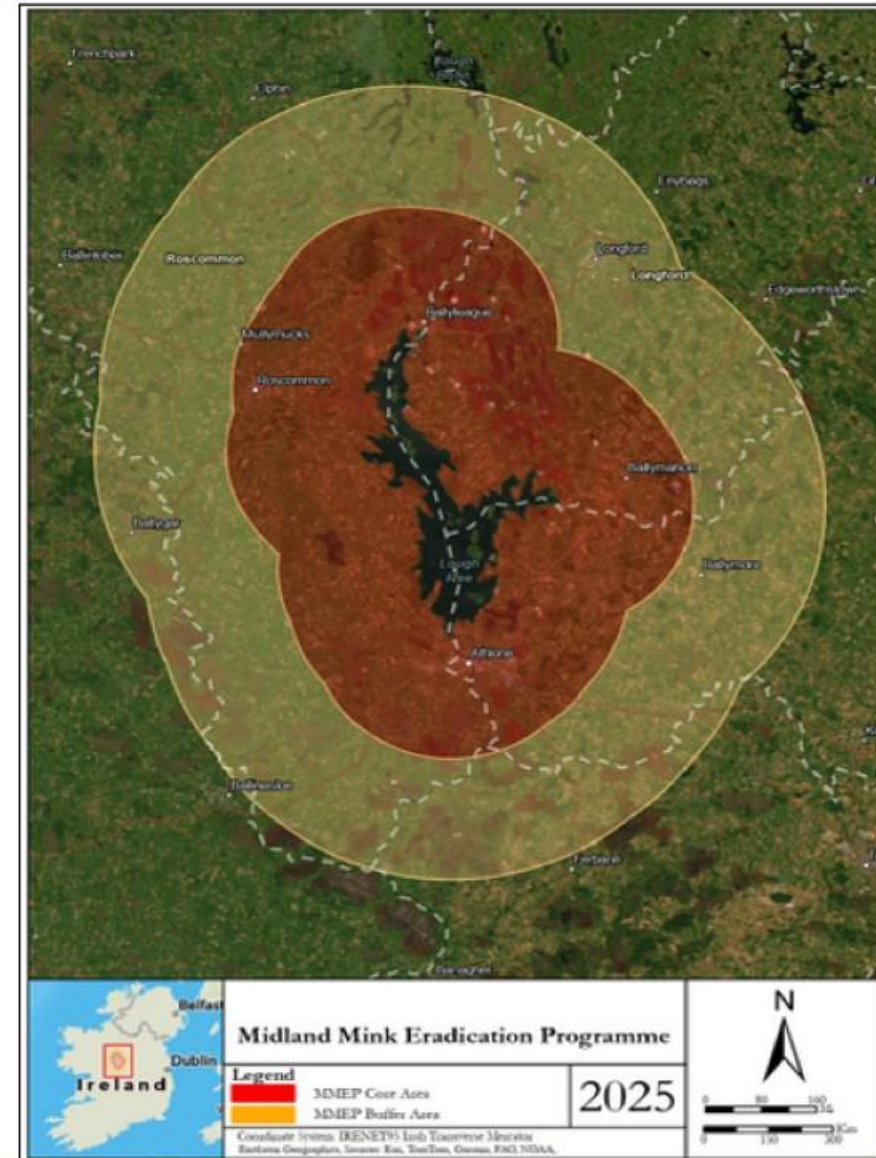
Midland's Pilot Area

The programme covers a 2,600km² area surrounding Lough Ree divided into:

- 1,030km² core area.
- 1,570km² buffer area.

A network of 600 traps will be strategically set and monitored within these areas for the duration of the programme.

- Trapping density of 1 trap/3km²
- 1/30th the area of Ireland



Project Interim Update



- The Programme was Launched in September 2025 at the Ploughing Championship.
- After staff recruitment, the programme started on 12th December 2025.
- Developed SOP's and Volunteer Training Programme for the Pilot project.
- Compiled volunteer list from MMEP website (launched September 2025)
- Recruited volunteers from NARGC members allowing trapping on Gun Club lands immediately.
- First training day held on 17 January 2026.

Trap Deployment and Captures



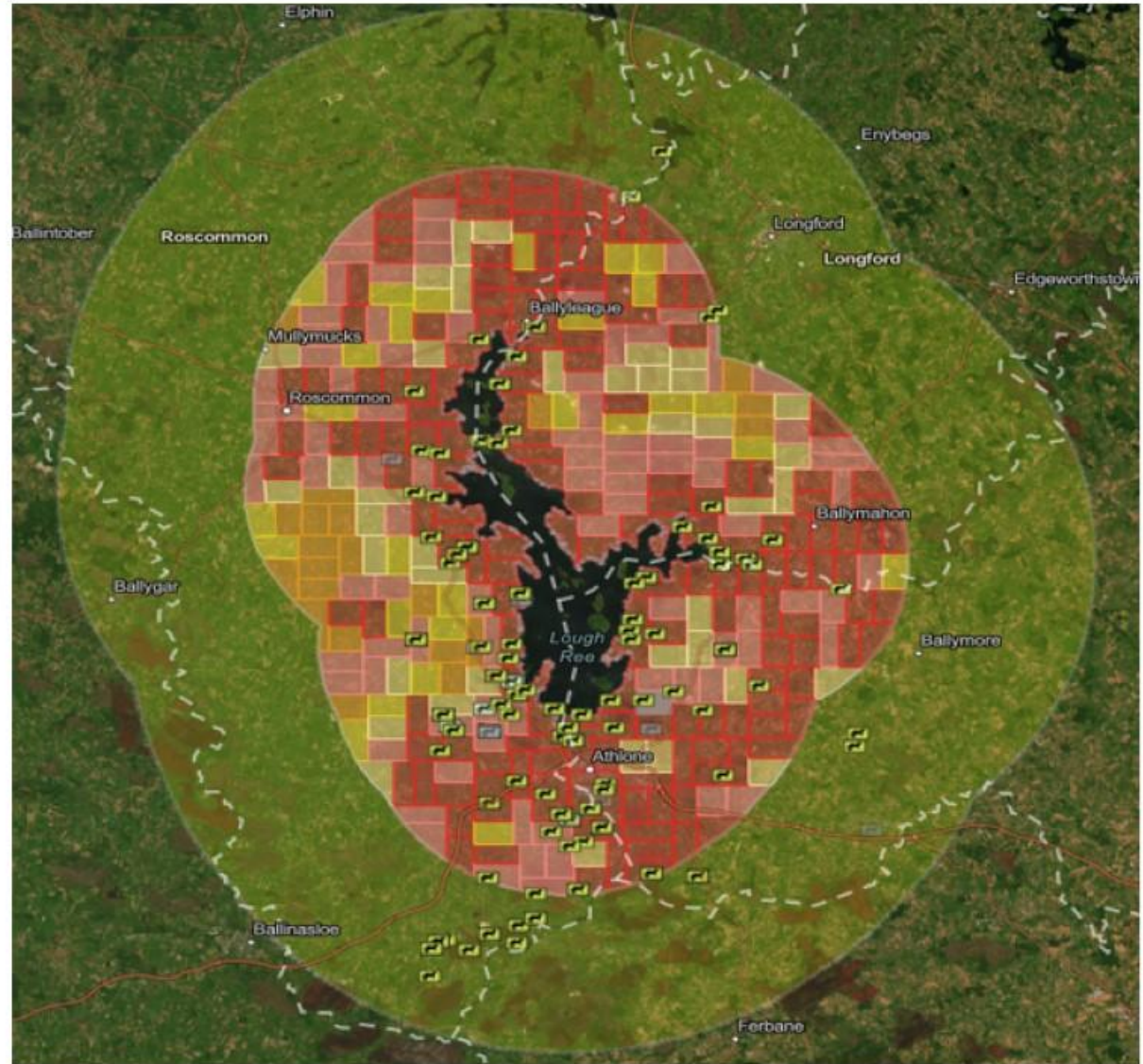
- 104 Traps active on site.
- 37 Mink captured and humanely dispatched to date.
- An additional 31 Mink have been captured by volunteers (catches were during the MMEP timeframe, in MMEP core/buffer area but at non 'MMEP trap locations'.)



Trap Locations on Lough Ree



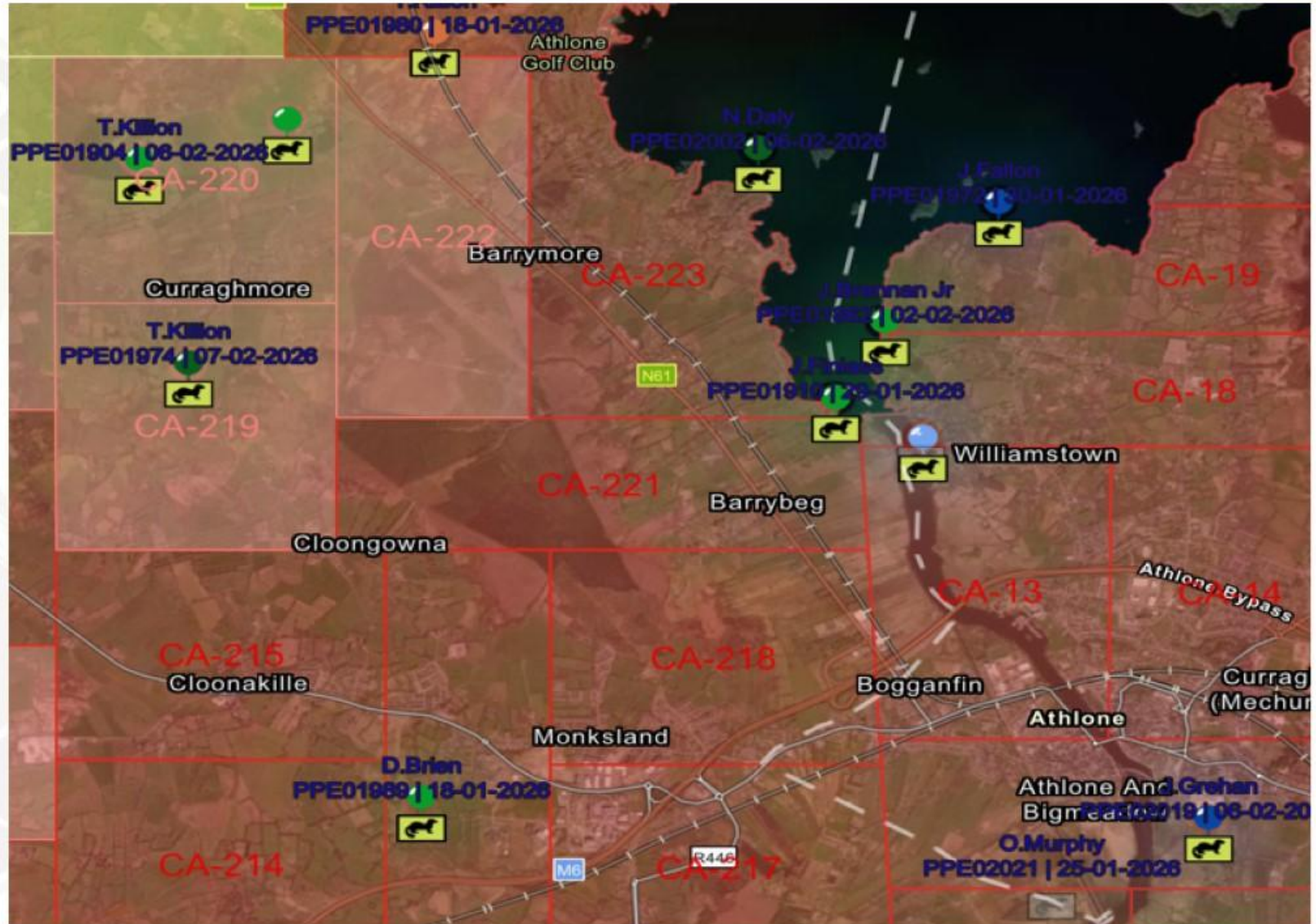
- Core area and buffer area are divided up into 3 Km² grids along all watercourses.
- 3.5 year Continuous trapping effort as opposed to intensive trapping.
- Trap sensors on all traps.
- High percentage on rafts



Trap Deployment



- Trap deployment showing trap located in each grid.
- Easy to see 'gaps'.
- All georeferenced.
- All data collected on Fieldmaps & Survey 123





Owen Murphy
Programme Director
owen.murphy@breedingwaders.ie



BREEDING WADERS
Ireland



An tSeirbhís Páirceanna Náisiúnta
agus Fiadhúlra
National Parks and Wildlife Service

